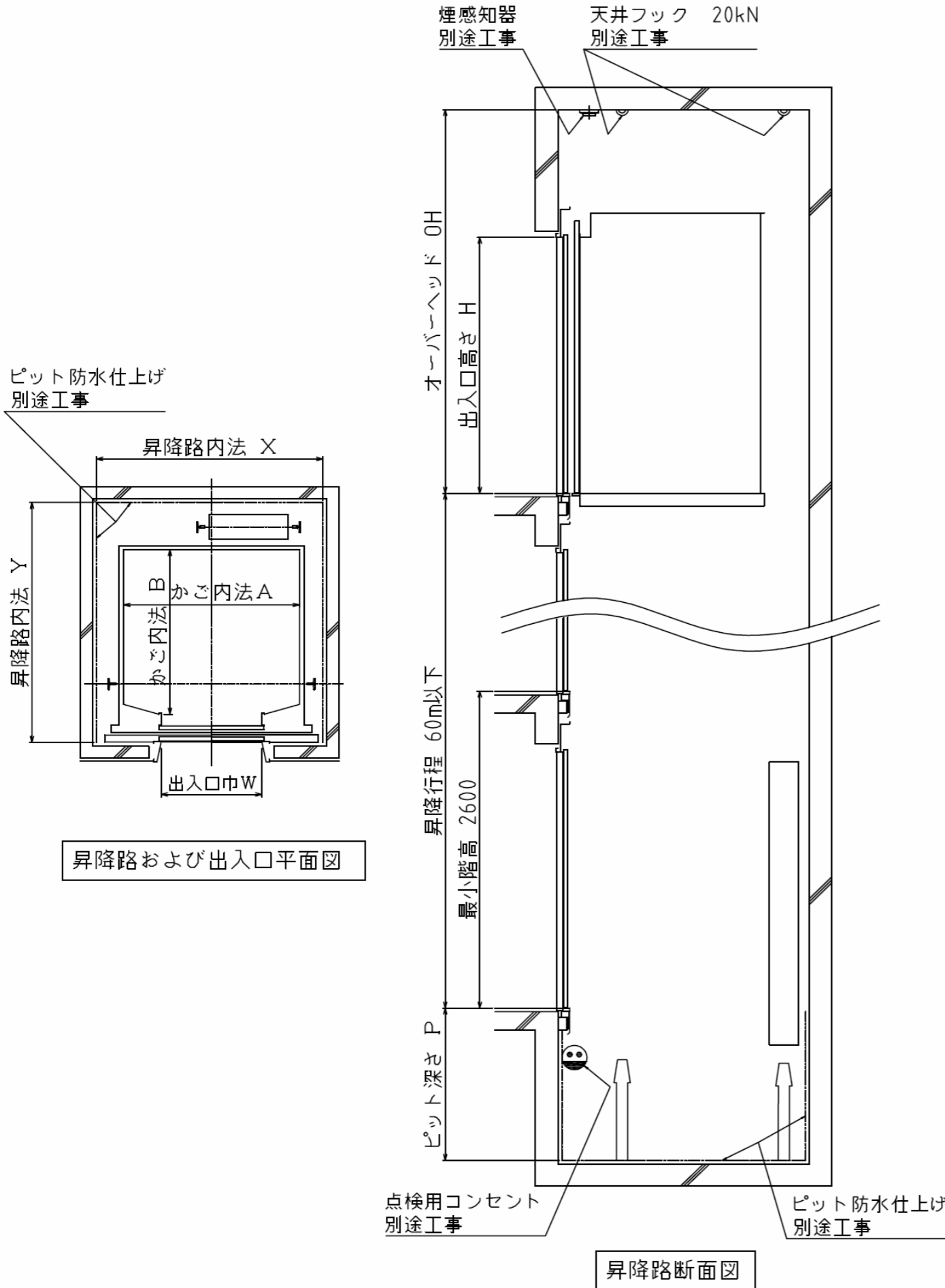


# 乗用エレベーター据付図および機種別寸法表



エレベーター型式	定員 (名)	積載 (kg)	A (mm)	B (mm)	W (mm)	H (mm)	X (mm)	Y (mm)	P (mm)	OH (mm)	容量 (kW)	備考
P6 - CO - 45	6	450	1,400	850	800	2,100	1,900	1,500	1,250	3,000	2.1	制御盤は乗場に設置
P6 - CO - 60							1,900	1,500	1,250	3,000	2.8	制御盤は乗場に設置
P6 - CO - 90							1,950	1,550	1,350	3,400	4.2	制御盤は乗場に設置
P9 - CO - 45	9	600	1,400	1,100	800	2,100	1,900	1,750	1,250	3,000	2.8	制御盤は乗場に設置
P9 - CO - 60							1,900	1,750	1,250	3,000	3.7	制御盤は乗場に設置
P9 - CO - 90							1,950	1,800	1,350	3,400	5.6	制御盤は乗場に設置
P9 - CO - 105							1,950	1,800	1,350	3,500	6.5	制御盤は乗場に設置
P11 - CO - 45	11	750	1,400	1,350	800	2,100	1,900	2,000	1,250	3,000	3.5	CO-W800:遮煙:無
P11 - CO - 60							1,900	2,000	1,250	3,000	4.6	CO-W800:遮煙:無
P11 - CO - 90							1,950	2,050	1,350	3,400	6.9	CO-W800:遮煙:無
P11 - CO - 105							1,950	2,050	1,350	3,500	8.1	CO-W800:遮煙:無
P11 - CO - 45	11	750	1,400	1,350	800	2,100	1,900	2,100	1,250	3,000	3.5	CO-W800:遮煙:有
P11 - CO - 60							1,900	2,100	1,250	3,000	4.6	CO-W800:遮煙:有
P11 - CO - 90							1,950	2,150	1,350	3,400	6.9	CO-W800:遮煙:有
P11 - CO - 105							1,950	2,150	1,350	3,500	8.1	CO-W800:遮煙:有
P13 - CO - 45	13	900	1,600	1,350	900	2,100	2,150	2,150	1,250	3,000	4.2	
P13 - CO - 60							2,150	2,150	1,250	3,000	5.6	
P13 - CO - 90							2,150	2,150	1,350	3,400	8.3	
P13 - CO - 105							2,150	2,150	1,350	3,500	9.7	
P15 - CO - 45	15	1,000	1,600	1,500	900	2,100	2,150	2,300	1,250	3,000	4.6	
P15 - CO - 60							2,150	2,300	1,250	3,000	6.2	
P15 - CO - 90							2,150	2,300	1,350	3,400	9.2	
P15 - CO - 105							2,150	2,300	1,350	3,500	11	

<注記> 昇降行程は60m以下  
 OH3000は光天井を除く(光天井時は+150mm)  
 OH3000は昇降行程40m以下に限る